

SLIDE VALVES

VG & VL Series

AIRMATIC

284 Three Tun Rd. Malvern, PA 19355

215.333.5600

infocenter@airmatic.com

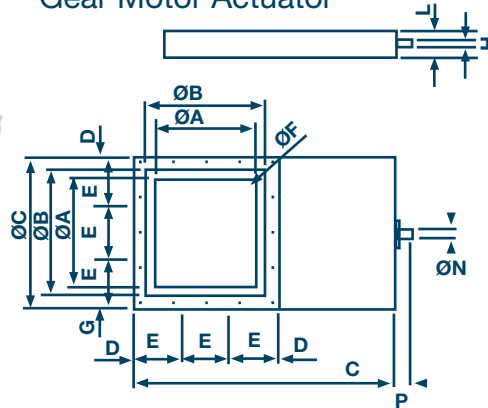
airmatic.com

VG Slide Valves are used to intercept or choke the flow of powders or granules. Their robust structure makes them perfectly suitable for heavy-duty applications in various sectors of application. To ensure maximum protection of the valve, the blade is equipped with a double seal. VG Slide Valves are available with hand wheel or pneumatic or electric actuator. The powder coated valves come in silver-gray color (RAL 7001).

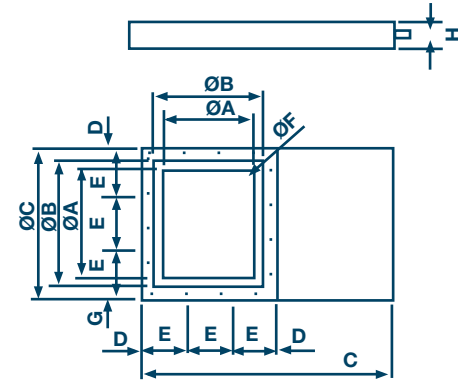
VG



VG-V With Hand Wheel or Gear Motor Actuator



VG-P With Pneumatic Actuator

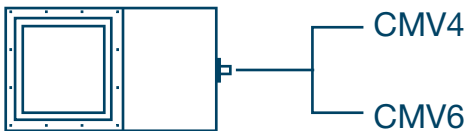


TYPE	A	B	C	D	E	N° E	Ø F	Ø Bolts	G	H	L	Ø N DIN 5482	P	Lb	
														VG-V	VG-P
VG 0500	17.7	20.6	25.7	1.0	4.7	15	0.6	M 12	51.1	5.2	1.3	1.1 x 0.9	2.3	196.1	191.8
VG 0600	21.6	24.6	29.6	1.0	5.5	15	0.6	M 12	59.0	5.2	1.3	1.1 x 0.9	2.3	242.5	229.2
VG 0700	25.5	28.5	35.2	1.3	6.4	15	0.6	M 12	67.7	5.2	1.3	1.1 x 0.9	2.3	297.6	282.1
VG 0800	29.5	32.4	39.1	1.3	7.2	15	0.9	M 12	75.5	5.2	1.3	1.1 x 0.9	2.3	396.8	397.1
VG 1000	37.4	40.3	48.6	1.5	6.4	15	0.7	M 12	92.1	5.2	1.3	1.1 x 0.9	2.3	529.1	507.1

Dimensions in inches

Compatible Actuator

Manual Actuator



Gear Motor



* Signalling Systems Required

Pneumatic Actuator



- BOB 02450*
- BOB 04850*
- BOB 11050*
- BOB 22050*

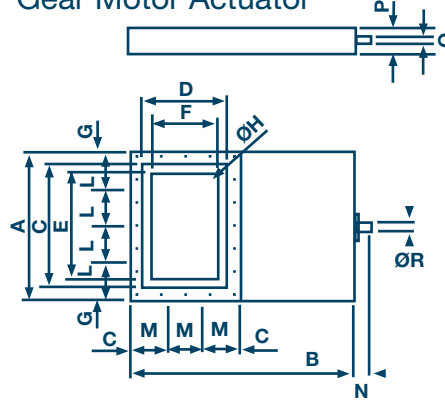
- BOB 024CC°
- BOB 048CC°
- BOB 110CC°
- BOB 220CC°

* Non WAM • Alternating Current ° Direct Current

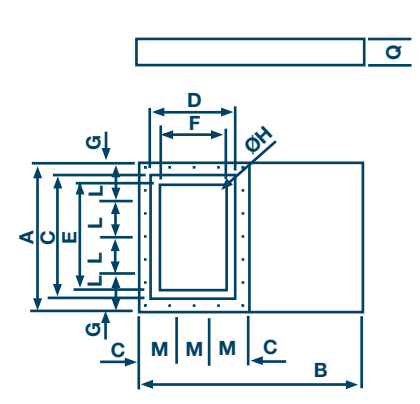
VGR



VGR-V With Manual Lever or Gear Motor Actuator



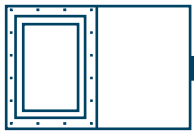
VGR-P With Pneumatic Actuator



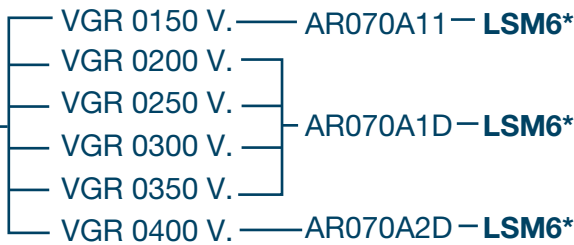
TYPE	A	B	C	D	E	F	G	Ø H	Ø Bolts	L	µL	M	Ft-Lb	N	P	Q	Ø R DIN 5482	Lb	
																		VG-V	VG-P
VGR 0150	13.6	21.1	10.2	6.8	8.0	4.6	0.6	0.5	M 10	4.1	0.1	4.5	1.4	1.9	2.8	5.2	0.8 x 0.7	55.1	50.1
VGR 0200	16.6	25.1	13.2	8.8	11.0	6.6	0.6	0.5	M 10	3.8	0.2	3.6	2.2	1.9	2.8	5.2	0.8 x 0.7	70.1	66.1
VGR 0250	19.4	29.0	16.1	10.8	13.8	8.6	0.6	0.5	M 10	4.5	0.2	4.3	2.2	1.9	2.8	5.2	0.8 x 0.7	85.9	81.2
VGR 0300	23.2	33.7	19.0	12.7	16.8	10.5	0.9	0.5	M 10	5.3	0.2	5.0	2.2	1.9	2.8	5.2	0.8 x 0.7	110.2	103.6
VGR 0350	26.2	37.7	22.0	14.7	19.8	12.5	0.7	0.5	M 10	3.5	0.3	3.5	3.6	1.9	2.8	5.2	0.8 x 0.7	130.1	123.5
VGR 0400	29.4	42.8	25.1	16.7	22.2	13.8	0.6	0.5	M 10	4.0	0.3	3.9	3.6	1.9	2.8	5.2	0.8 x 0.7	187.4	176.4

Dimensions in inches

Gear Motor Drive

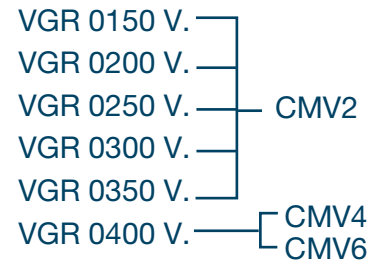
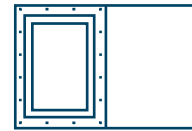


* Signalling Systems
Required

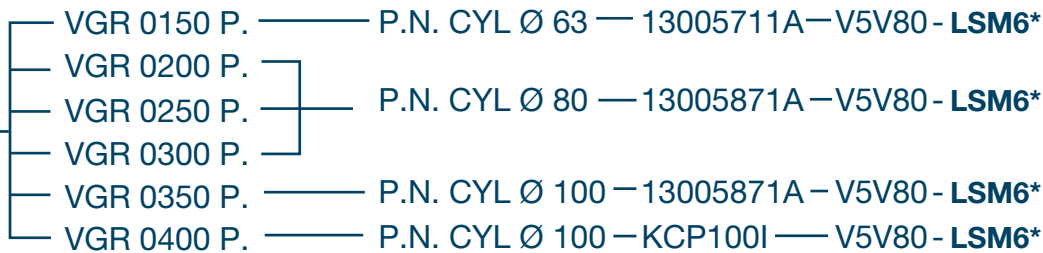
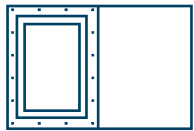


Compatible Actuator

Manual Lever



Electropneumatic Actuator



- BOB 02450*
- BOB 04850*
- BOB 11050*
- BOB 22050*
- BOB 024CC°
- BOB 048CC°
- BOB 110CC°
- BOB 220CC°



ISO 6431
VDMA 24562

* Non WAM

* Non WAM

• Alternating Current

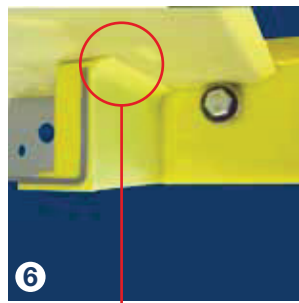
○ Direct Current

VL **VL Slide Valves** are used where the flow of a powder bulk solids caused by gravity or transport has to be intercepted. Valves may be fitted to hopper or silo outlets, to the inlets and outlets of mechanical conveyors and to the inlet of telescopic loading spouts.

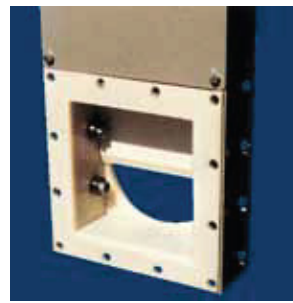
VL-type Slide Valves consist of a two-piece carbon or stainless steel frame, which is partly coated with WAM's unique SINT™ engineering polymer composite, and a sliding blade manufactured either in the same material or in stainless steel. The use of SINT™ engineering polymer considerably increases resistance to abrasion compared to traditional valves. The special geometry of the Valve and the different options of blade design enable its application in virtually every sector including the food industry.



VLQ - VLR - VLS



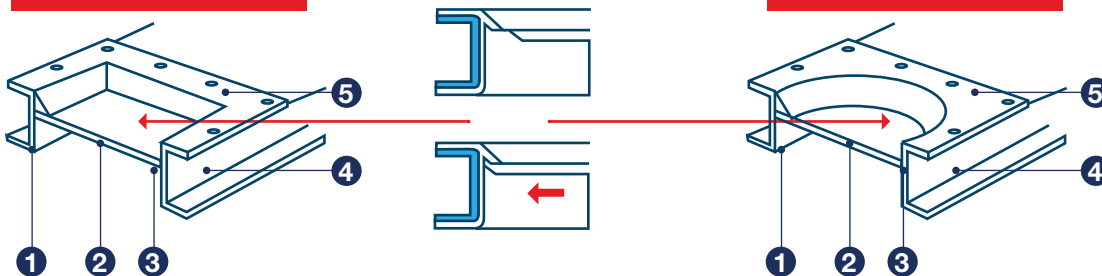
6



VLC



Three interchangeable actuators for series VLQ-VLC-VLR valves.



VALVE BREAKDOWN

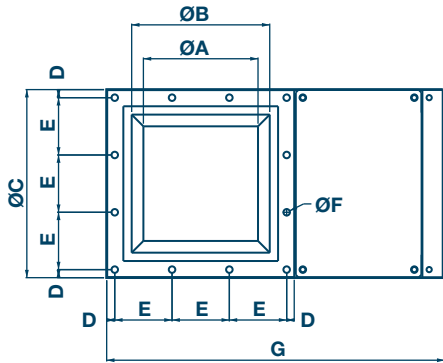
1. Valve body coated with SINT™MC or SINT™AL in order to avoid contact between product and body.
2. Heavy-duty blade (SINT™MC / SINT™AL, carbon steel, 304 st.)
3. Minimum friction contact
4. No additional lateral seals required
5. Dry food quality (coating in SINT™AL)
6. Dustproof (scraper included)

USER BENEFITS

- Easy to handle
- Ex-stock delivery
- Highly abrasion-resistant
- Easy to fit
- Time-saving maintenance

OPTIONS

- Valve manufactured in carbon steel lined and coated with SINT™MC.
- Valve in 304 stainless steel lined and coated with SINT™AL (FDA-approved)



VLQ

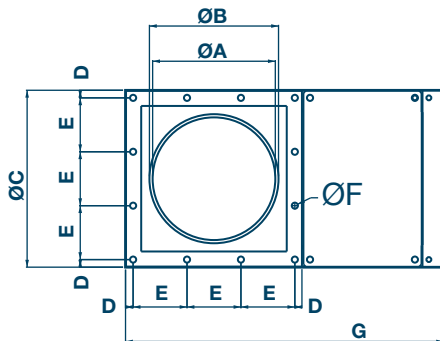
Square Cross Section Valves



TYPE	A	B	C	D	E	N° E	ØF	Bolts	G	H	Lb
VLQ0150	4.7	6.9	10.3	0.6	4.5	2	0.5	M10	17.9	4.4	30
VLQ0200	6.7	8.9	12.2	0.6	3.7	3	0.5	M10	21.8	4.4	39.6
VLQ0250	8.7	10.8	14.2	0.6	4.3	3	0.5	M10	25.5	4.4	48.5
VLQ0300	10.6	12.8	17.0	0.9	5.1	3	0.5	M10	30.1	4.4	66.1
VLQ0350	12.6	14.8	18.9	0.7	3.5	5	0.5	M10	35.4	4.9	88.2
VLQ0400	14.5	16.7	20.1	0.6	3.9	5	0.5	M10	39.3	4.9	101.4

1 Carbon Steel
 3 304 Stainless Steel

Dimensions in inches



VLC

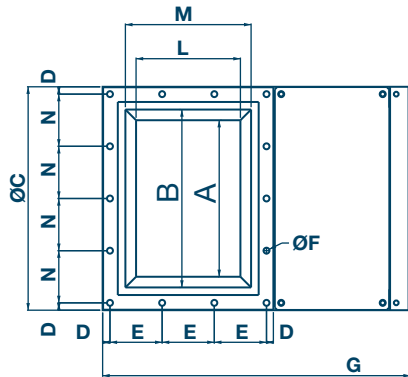
Round Cross Section Valves



TYPE	A	ØB	ØC	D	E	N° E	ØF	Screw	G	H	Lb
VLC0150	5.9	6.5	10.3	0.6	4.5	2	0.5	M10	17.9	4.4	30.9
VLC0200	7.9	8.5	12.2	0.6	3.7	3	0.5	M10	21.9	4.4	39.7
VLC0250	9.8	10.4	14.2	0.6	4.3	3	0.5	M10	25.6	4.4	48.5
VLC0300	11.9	12.4	17.0	0.9	5.0	3	0.5	M10	30.1	4.4	66.1
VLC0350	17.8	13.4	18.9	0.7	3.5	5	0.5	M10	35.4	4.9	88.1
VLC0400	15.7	16.3	20.1	0.6	3.9	5	0.5	M10	39.3	4.9	101.4

1 Carbon Steel
 3 304 Stainless Steel

Dimensions in inches



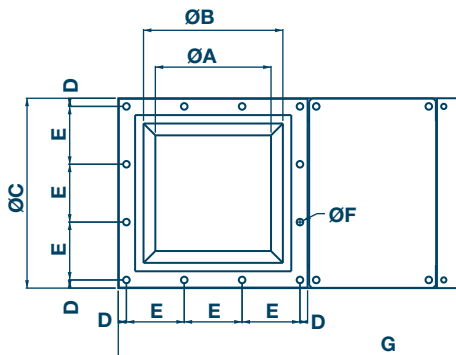
VLR Rectangular Cross Section Valves



TYPE	A	B	C	D	E	N° E	ØF	Bolts	G	H	L	M	N	N° N	Lb
* VLR0150	8.0	10.2	13.6	0.6	4.5	2	0.5	M10	17.9	4.3	4.7	6.9	4.1	3	39.7
* VLR0200	11.0	13.3	16.7	0.6	3.7	3	0.5	M10	21.9	4.3	6.7	8.9	3.9	4	55.1
* VLR0250	13.9	16.1	19.5	0.6	4.3	3	0.5	M10	2.6	4.3	8.6	10.8	4.6	4	66.1
VLR0300	16.9	19.0	23.3	0.9	5.0	3	0.5	M10	30.1	4.3	10.6	12.8	5.4	4	88.1

1 Carbon Steel
3 304 Stainless Steel

* Not yet in production
Dimensions in inches



VLS Slide Valve With Internal Actuator



TYPE	A	B	C	D	E	N° E	ØF	Bolts	G	H	Lb
VLS0150	4.7	6.9	10.3	0.6	4.5	2	0.5	M10	17.9	4.4	36.4
VLS0200	6.7	8.9	12.3	0.6	3.7	3	0.5	M10	21.9	4.4	46.2
VLS0250	8.7	10.8	14.2	0.6	4.3	3	0.5	M10	2.6	4.4	56.2
VLS0300	10.6	12.8	17.0	0.9	5.0	3	0.5	M10	30.1	4.4	75.0

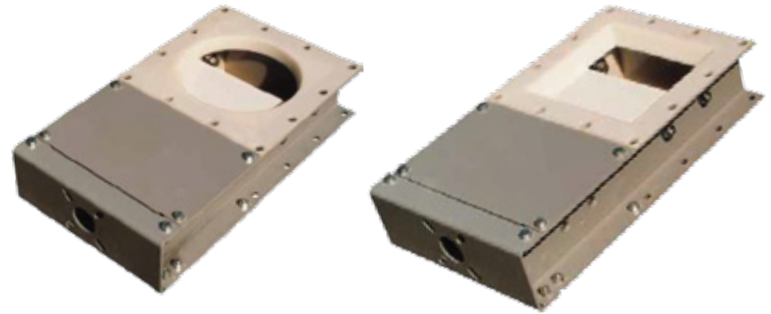
1 Carbon Steel
3 304 Stainless Steel

Dimensions in inches

Valve with single type of actuator (pneumatic cylinder Ø 2.5 in) mounted inside the valve frame.

HAND WHEEL COMPATIBILITY

VLQ - VLC 0150	————	CMG0150 I.
VLQ - VLC 0200	————	CMG0200 I.
VLQ - VLC 0250	————	CMG0250 I.
VLQ - VLR-VLC 0300	————	CMG0300 I.
VLQ - VLC 0350	————	CMG0350 I.
VLQ - VLC 0400	————	CMG0400 I.

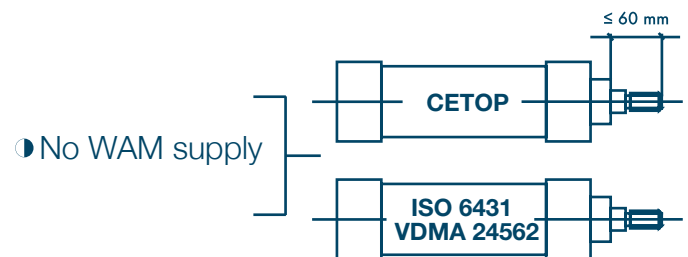


PNEUMATIC ACTUATOR COMPATIBILITY

VLQ - VLC 0150	————	P.N. CYL. Ø 63	————	KCP 063 1525 - V5V80 - LSM6	<ul style="list-style-type: none"> • BOB 02450 • BOB 04850 • BOB 11050 • BOB 22050 Δ BOB 024CC Δ BOB 048CC Δ BOB 110CC Δ BOB 220CC
VLQ - VLC 0200	}	P.N. CYL. Ø 80	————	KCP 100 3540 - V5V40 - LSM6	
VLQ - VLC 0250					
VLQ - VLR-VLC 0300					
VLQ - VLC 0350	}	P.N. CYL. Ø 100	————	KCP 080 1530 - V5V80 - LSM6	
VLQ - VLC 0400					

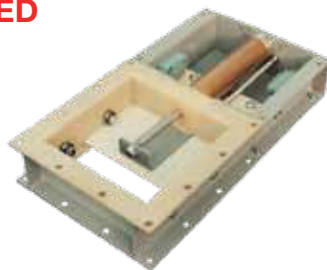
GEAR MOTOR COMPATIBILITY

VLQ - VLC 0150	————	CRG010A150 I	} LSM6*
VLQ - VLC 0200	————	CRG010A200 I	
VLQ - VLC 0250	————	CRG010B250 I	
VLQ - VLR - VLC 0300	————	CRG010B300 I	
VLQ - VLC 0350	————	CRG010B350 I	
VLQ - VLC 0400	————	CRG010B400 I	



PNEUMATIC ACTUATOR COMPATIBILITY

**NO HEADLOAD
ALLOWED**



Valve viewed upside down

VLS 0150	}	V5V8 + 2 BOB	<ul style="list-style-type: none"> • BOB 02450 • BOB 04850 • BOB 11050 • BOB 22050 Δ BOB 024CC Δ BOB 048CC Δ BOB 110CC Δ BOB 220CC
VLS 0200			
VLS 0250			
VLS 0300			
		V5V8 + 1 BOB	

• ALTERNATING CURRENT Δ DIRECT CURRENT

VDI

The VDI Inclined Slide Valve is innovative as a whole. Its inclined blade forms an eye-shaped aperture with the asymmetrically tapered inner body. The wider the eye is opened, the more material flows through, the further it is closed, the more the material flow is reduced.

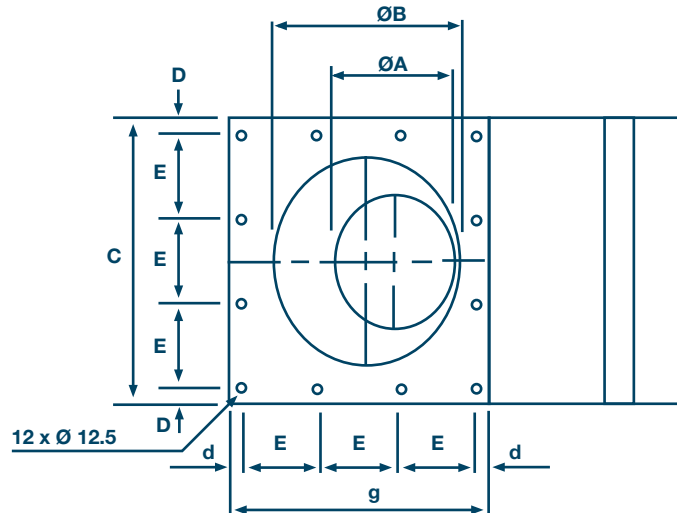
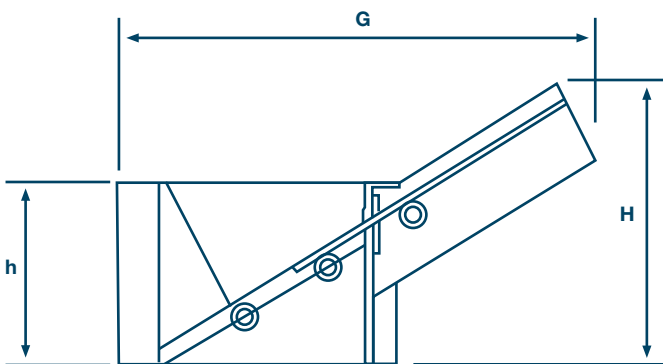
The inner body consists of a self-supporting cast in SINT® engineering polymer composite. The blade is manufactured from carbon or stainless steel. The Valve can be operated manually, electropneumatically or by gear motor. Function

The VDI Inclined Slide Valve adds to the simple function of material flow by gravity interception the ability to control the material flow. The particular asymmetrical geometry of the blade enables flow adjustment adding, within certain limits, volumetric feeding properties to the unit. VDI Valves can be mounted on the outlets of hoppers, tanks, silos, screw conveyors, and loading bellows. Due to the different blade options they are used in virtually every industry, food-grade applications included.



BENEFITS

- SINT® engineering polymers for standard or food-grade applications
- Dustproof design
- Intermediate blade positions for feeding
- Highly abrasion-resistant



TYPE	ØA	ØB	C	D	d	E	ØF	Bolts	G	g	H	h	Lb
VDI0150_	5.4	8.8	12.2	0.6	0.6	3.7	0.5	M 10	23.4	12.2	14.1	9.2	48.5
VDI0250_	7.9	12.2	17.0	0.9	0.7	5.0	0.5	M 10	30.7	16.6	15.4	10.1	83.7
VDI0300_	9.8	14.2	19.0	0.7	0.7	3.5	0.5	M 10	32.7	18.9	18.2	11.7	147.7

Dimensions in inches

- 1 mild steel
- 2 stainless steel 304



• Controlled Material Flow

HAND WHEEL COUPLING

- VDI 0150.. -CMG0200 I.
- VDI 0250.. -CMG0300 I.
- VDI 0300.. -CMG0300 I.

PNEUMATIC ACTUATOR COUPLING

- VDI 0150.. — P.N. CYL.Ø 63 x 200 — KCP 063 1525 - V5V80 - LSM6
- VDI 0250.. — P.N. CYL.Ø 80 x 300 — KCP 080 1530 - V5V80 - LSM6
- VDI 0300.. — P.N. CYL.Ø 80 x 300 — KCP 080 1530 - V5V80 - LSM6

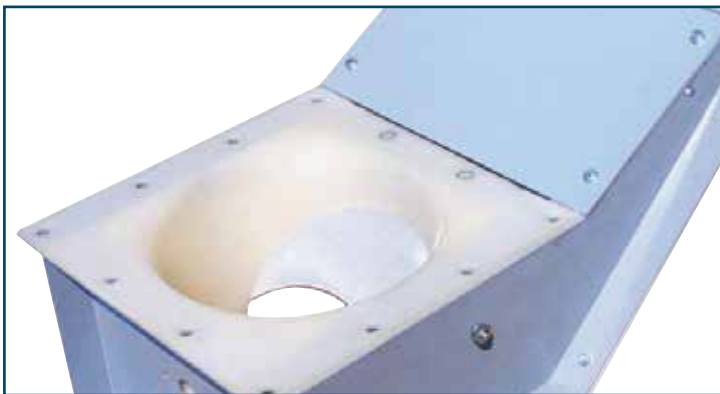
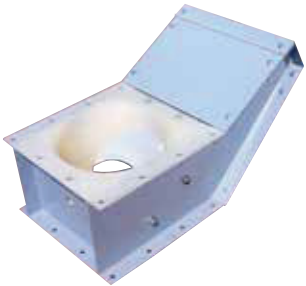
*Series BOB WAM

- Aluminium Body
- Alternating Current
- Direct Current

NON WAM
GEAR MOTOR COUPLING

Under Heavy Load

- VDI 0150.. — CRG010B200 I.
 - VDI 0250.. — CRG010B300 I.
 - VDI 0300.. — CRG010B300 I.
-] LSM6





AIRMATIC founded in 1944, is a woman-owned Industrial Distributor, with installation and maintenance capabilities, offering equipment, machinery, and shop supplies to the Industrial, Construction, Utility, Government, and Commercial Markets. Our products and services are sold through three business units:

The **MATERIALS MANAGEMENT GROUP** provides products and services to industries that convey, store, transport, and process powders and bulk solids from aggregates, cement, and chemicals to foods, grains, metals, power generation, and waste water treatment applications;

The **SERVICE GROUP** provides fabrication, installation, and maintenance services to improve bulk materials handling efficiency; mechanical clean-out services for silos and hoppers to eliminate material flow problems; and shop repair/rebuilding and modifications services of products sold by the Company.

The **TOOL GROUP** provides power tools, personal protective equipment, materials-handling equipment, shop equipment and MRO supplies used for production, fabrication, assembly, metal removal, maintenance, and storage in manufacturing, construction, utility, and commercial applications.

Our Customers tell us that by choosing AIRMATIC to solve their problems, they gain increased productivity, decreased costs, and a safer, cleaner work environment.



WAM is a worldwide leader in developing and manufacturing equipment and plant components for bulk solids handling and processing, has been represented in the United States by its own subsidiary since 1985. WAM Inc. is responsible for distribution of the WAMGROUP product range in the U.S. and Canada.

AIRMATIC

284 Three Tun Rd. Malvern, PA 19355
215.333.5600
infocenter@airmatic.com
airmatic.com